

HEAVY INDUSTRIAL CONSTRUCTION WORKFORCE OUTLOOK TO 2022

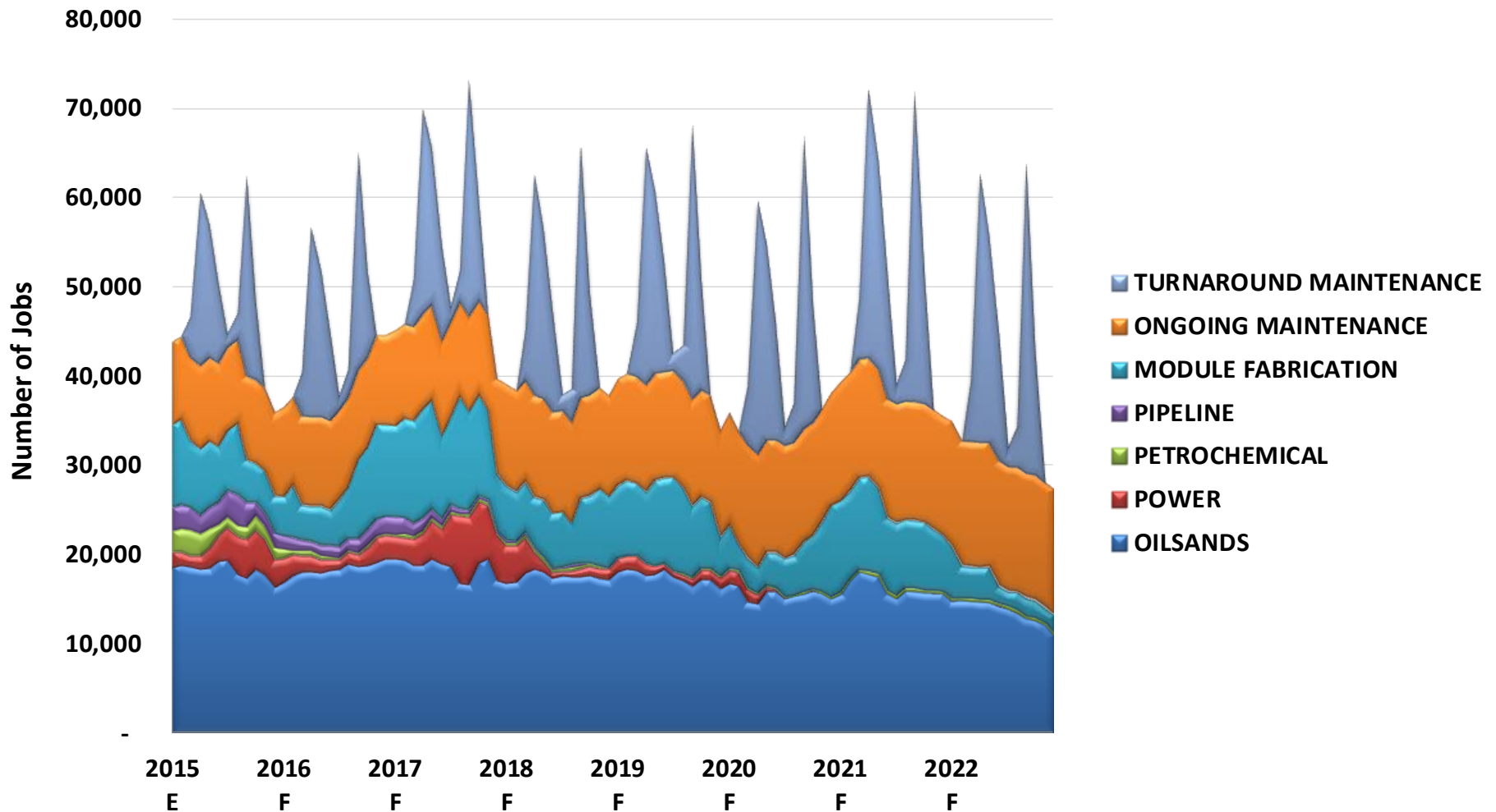
May 2015



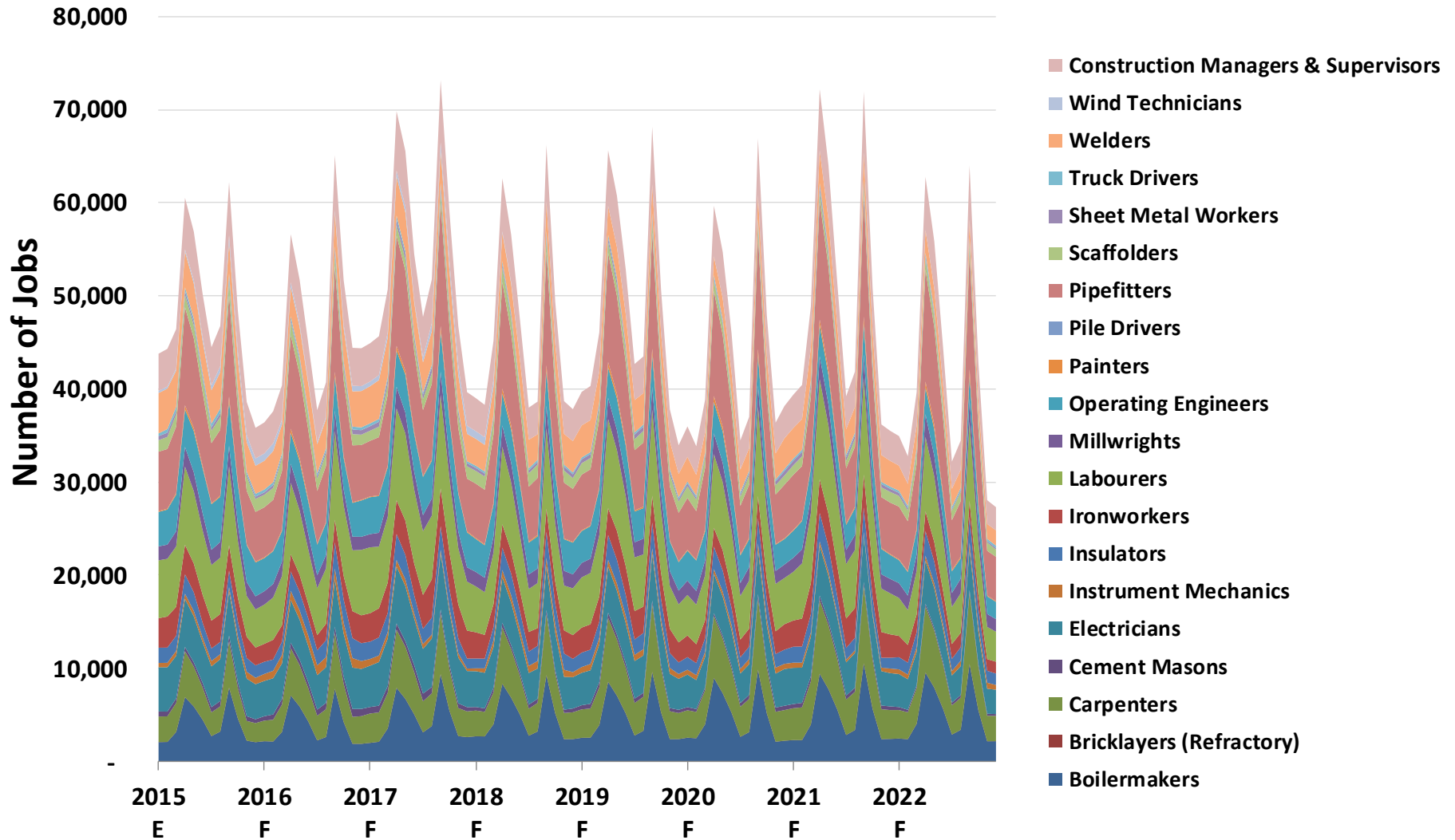
UPDATES IN MAY 2015

- **The following reflects updates that have been made to the projections in May 2015**
 - **Refreshed pipeline workforce projection based on updated project information as validated by companies:**
 - **Oil Sands (Mining, In-situ, Upgrading)**
 - **Petrochemical**
 - **Pipeline (Pipelines, Pump-stations, Terminals)**
 - **Power Generation (Wind & Gas)**
 - **Refreshed modularization workforce projection**
 - **Refreshed ongoing and turn-around maintenance workforce projection**
 - **Incorporated all projects that have been announced as of April 30, 2015**

HEAVY INDUSTRIAL CONSTRUCTION WORKFORCE REQUIREMENT TO 2022

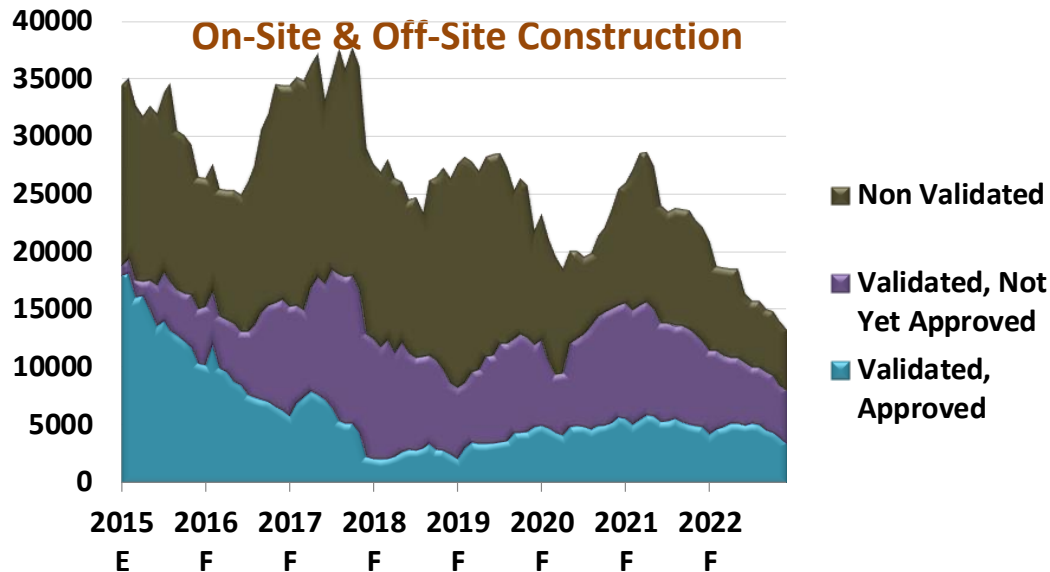
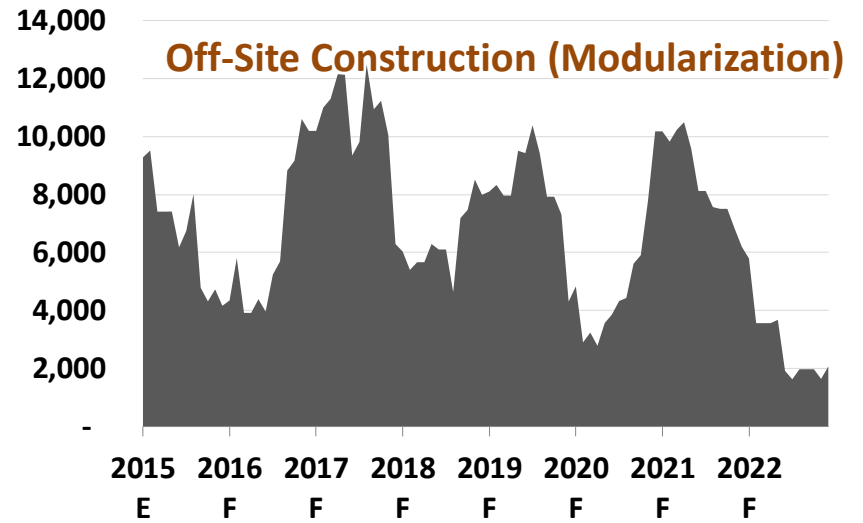
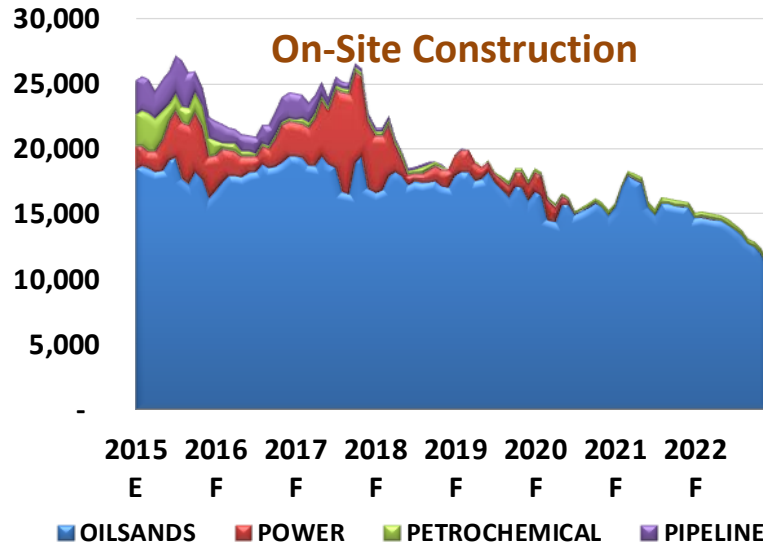


HEAVY INDUSTRIAL CONSTRUCTION WORKFORCE REQUIREMENT TO 2022



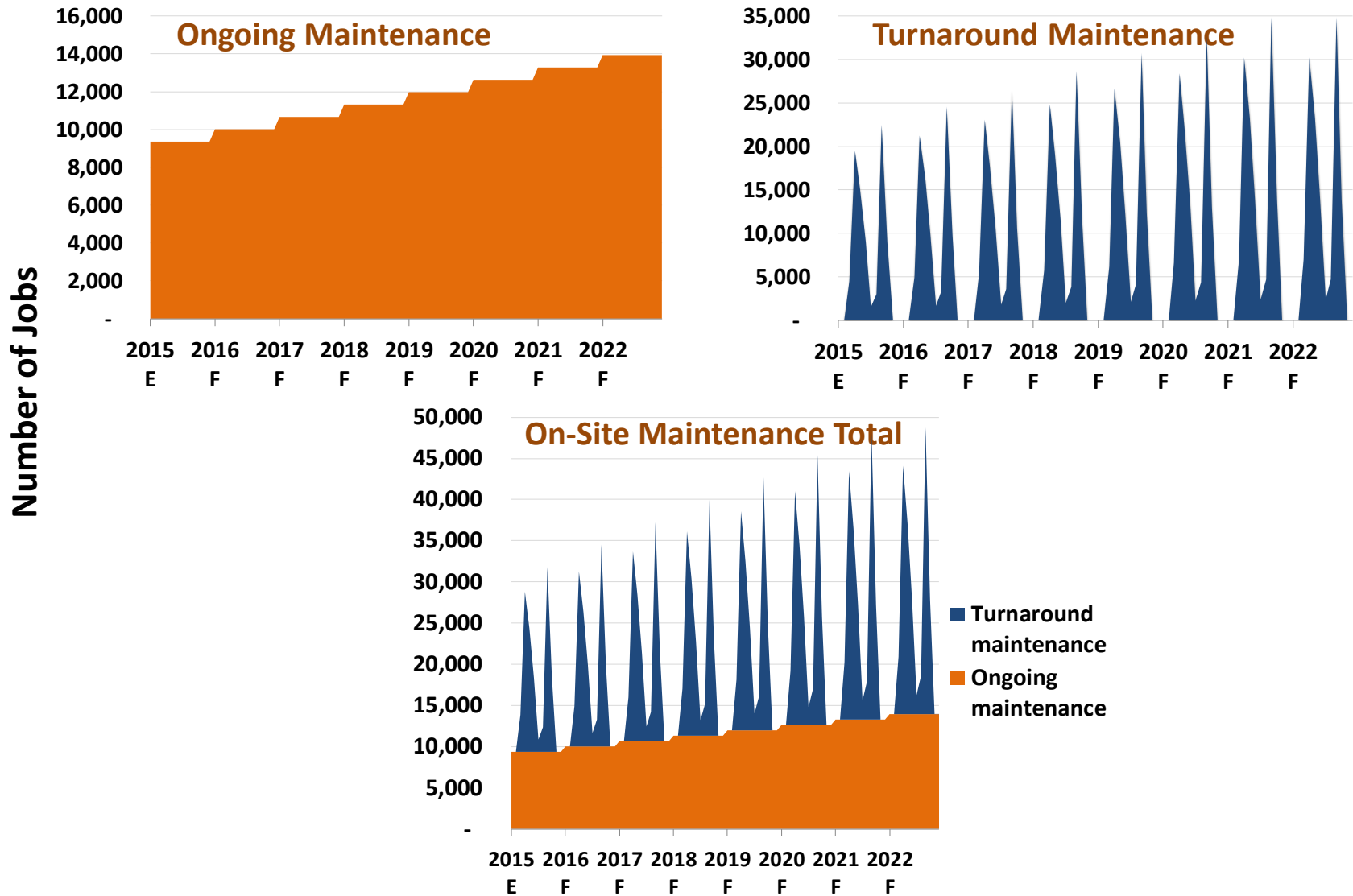
HEAVY INDUSTRIAL CONSTRUCTION WORKFORCE REQUIREMENT TO 2022

Number of Jobs



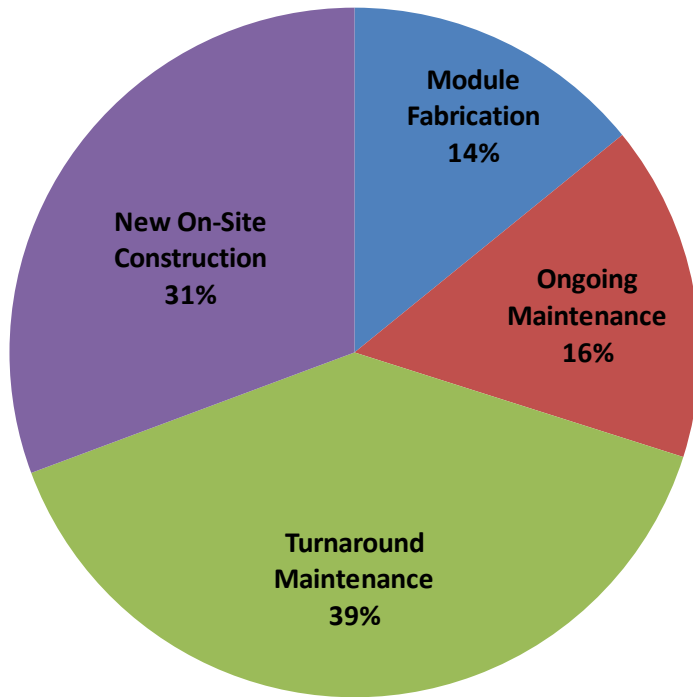
HEAVY INDUSTRIAL CONSTRUCTION

WORKFORCE REQUIREMENT TO 2022



HEAVY INDUSTRIAL CONSTRUCTION WORKFORCE REQUIREMENT TO 2022

Distribution of Workforce Requirement by Type of Project



Distribution of Workforce Requirement by Occupation

