



# Creating Project Alignment

Lloyd Rankin of ASI Group

Geoff Ryan of Insight-WFP

Laurent St Louis of ASI Assessments

# Introductions

**Lloyd Rankin**  
**President**  
**Group ASI and**  
**Ascension Systems Inc.**

**Geoff Ryan**  
**President**  
**Insight-WFP Inc.**

**Laurent St Louis**  
**President**  
**ASI Assessments Inc.**



# AGENDA

- **WorkFace Planning (WFP) Defined**
- **Owner**
  - Why WorkFace Planning?
  - What is required for effective implementation?
- **Construction Contractor and Tradesperson**
  - Why WorkFace Planning?
  - What is required for effective implementation?
- **Engineering Contractor**
  - Why WorkFace Planning?
  - What is required for effective implementation?
- **WorkFace Planning Resources:**
  - COAA Website, Group ASI Inc., Ascension Systems Inc., ASI Assessments Inc., Insight-WFP

# WORKFACE PLANNING DEFINED

**The process of organizing and delivering all elements necessary - before work is started - to enable craft persons to perform quality work in a safe, effective and efficient manner.**

# WORKFACE PLANNING

## Implications

- **Work is Packaged in Field Installation Work Packages (FIWP)**
- **Resource constraints need to be identified and satisfied**
- **Early construction input**
- **Front end changes**
- **All stakeholders need to understand their new roles and responsibilities**

# ALIGNMENT



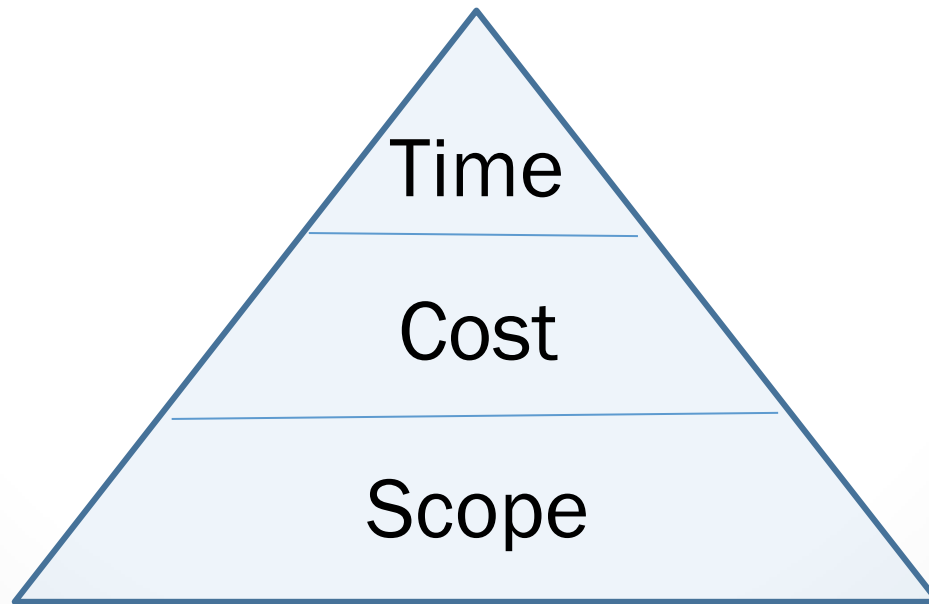
# WORKFACE PLANNING KEY STAKEHOLDERS

- Owner
- Construction Contractor and Tradespeople
- Engineering and Procurement



# WORKFACE PLANNING - OWNER

## Why do they want WorkFace Planning?





# WORKFACE PLANNING - OWNER

What do they need to do?

- **BE THE LEADER**
- Understand WFP
- Establish sponsors and champions
- Establish policies and procedures for WFP



# WORKFACE PLANNING - OWNER

What do they need to do?

- Make WFP a contractual requirement
- Verify that others have the capability to do or support WFP
- Staff for WFP
- Audit the WFP systems
- Recognize Success



# WORKFACE PLANNING – Construction Contractor and Tradespeople

## Why do they want WorkFace Planning?



- Their clients want it
- It will lead to more projects
- To gain a competitive advantage
- To retain existing business

# WORKFACE PLANNING – Construction Contractor and Tradespeople

What do they need to do?

- Understand WFP \*
- Establish sponsors and champions
- Establish a policies and procedures for WFP
- Make WFP a contractual requirement



# WORKFACE PLANNING – Construction Contractor and Tradespeople



## What do they need to do?

- Verify that others have the capability to do or support WFP
- Staff for WFP
- Audit the WFP systems
- Recognize success

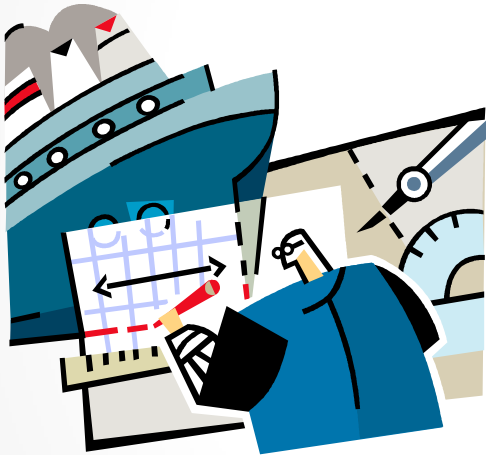
# WORKFACE PLANNING – Engineering Contractor

## Why do they want WorkFace Planning?



- Their clients want it
- It will lead to more projects
- To gain a competitive advantage
- To retain existing business

# WORKFACE PLANNING – Engineering and Procurement



What do they need to do?

- Understand WFP
- Establish sponsors and champions
- Have a policies and procedures for supporting WFP (Align deliverables with POC)
- Staff for WFP
- Audit the WFP Systems
- Recognize success

# WORKFACE PLANNING: RESOURCES



**COAA**  
Construction Owners  
Association of Alberta

CREATING AND PROMOTING  
**BEST PRACTICES**  
FOR HEAVY INDUSTRIAL CONSTRUCTION

Search

**BEST PRACTICES SAFETY**

**BEST PRACTICES WORKFORCE DEVELOPMENT**

**BEST PRACTICES PRODUCTIVITY**

**BEST PRACTICES CONTRACTS**

Productivity » WorkFace Planning

» Home

» About COAA

» COAA Awards

» Best Practices Conferences

» Safety

» Workforce Development

» Productivity

» Rework Reduction

» Benchmarking

» WorkFace Planning

## WorkFace Planning

### WorkFace Planning is Here.

It's considered a Best Practice of the Construction Owner's Association of Alberta.

It's about getting the right things to the right people at the right time to save money and improve productivity in your large-scale construction projects.

Take a few minutes to click through this website and get an overview & executive summary of WFP as well as in-depth information about the WFP model and processes (from high-level theory to practical application) with implementation guides and sample WFP-specific document templates and reference sheets.



[coa.ab.ca/productivity/workfaceplanning.aspx](http://coa.ab.ca/productivity/workfaceplanning.aspx)



# WORKFACE PLANNING RESOURCES

## Group ASI and Ascension Systems Inc.



- Classroom based courses from basics to detailed courses in WFP available throughout North America
- On-line courses for Owners, Construction and Engineering Contractors, Tradespeople, and Executives available worldwide

# WORKFACE PLANNING RESOURCES

## Insight - WFP



- **Developing policies**
- **Creating procedures**

# WORKFACE PLANNING RESOURCES

## ASI Assessments Inc.



- **WFP Assessments**
- **WFP Staffing**



