



**SUNCOR**

**Safety and Productivity Moment:**  
*Safety and Productivity Technology at Suncor*

# Safety & Productivity Technology at Suncor

The Safety & Productivity Technology uses near real-time location technology to:

1. Enhance Worker Safety
2. Support Productivity and Site Efficiency Opportunities

## Background:

### Technology Implemented at:

- Two Operating Plant Sites for:
  - Turnarounds
  - Regular Operations
- One Large Construction Project
  - Daily Onsite Manpower: >6000 Craft
  - >14,000 Technology Devices Paired to Craft and Leadership
- One Debottleneck Construction Project
  - Peak Manpower ~375
  - New GPS/Cellular Technology Pilot - 16 Month Duration - Brownfield Application

# Safety & Productivity Technology at Suncor

## Enhanced Worker Safety:

The technology supported the response to **9 medical emergencies** on construction sites in 2017-2018, including **4 serious events**.

### Key events:

- **Event 1:**

- Worker experienced a seizure **13 stories up** in steel structure.
- The technology panic alarm initiated the response.
- ESD was able to reach the individual within **11 minutes**.

- **Event 2:**

- Worker had a **cardiac event** in a break area.
- Individual's device was activated by co-worker
- Device was the only notification mechanism of event - no radios, phones or supervision were in the immediate area.
- ESD was able to reach the individual within **6 minutes**.

# Safety & Productivity Technology at Suncor

## Support Productivity and Site Efficiency Opportunities:

Location data (anonymized and aggregated to groups of 5 or more workers) also provided powerful insight into workforce movement and supported key conversations and decisions.

### Examples:

#### Workforce Management:

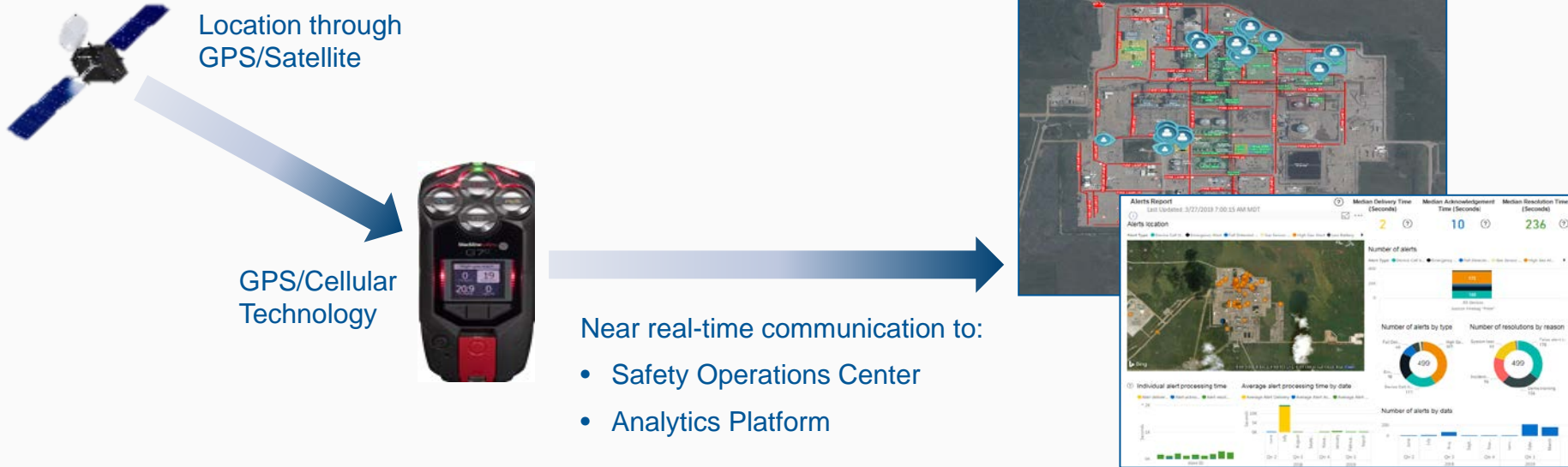
- Provided a visual representation of a large workforce movement (>6000 workers) and supported execution milestone delivery.

#### Facilities Location Optimization:

- This analysis identified areas of opportunities for leadership to move facilities and reduce craft commute times to and from the workface.

# What is new in Safety and Productivity Technology?

A GPS/Cellular technology was selected for a Pilot Implementation on a Suncor project in 2019:



## Value

(with New Technology)

## Safety

SOS Button  
(panic alarm)

2-way Voice and Text  
Communication

Gas Detection Option

Evacuation Support

## Cost Reduction

Deployment Costs  
Infrastructure, Resources

'Data to Action'  
Analytics

## Innovation

New Functionalities  
ex.: 'Push-to-Talk'

New Opportunities  
ex.: Equipment Utilization